



Who should use JMP® and SAS®?

SAS programmers who want to program in a development environment that includes graphical analysis and tools for their SAS data will love the combination of JMP and SAS.

Business users will find the point-and-click access to SAS data and the power of SAS analytics for reporting and analysis most appealing. These users want data and report access, but they also need to explore and discover trends and patterns in their data.

Scientists and engineers who need SAS for data integration and advanced analytics will also greatly benefit from the new product integration. These people use JMP to access SAS data marts that contain their pre-integrated data. SAS applications built in JMP can provide these users point-and-click interfaces to advanced analytics available in other SAS products, such as SAS/STAT®, SAS/IML®, SAS/ETS®, SAS/OR® and SAS/QC®.

SAS® Programming Using JMP® 7

If you like programming in SAS, you'll love programming SAS using JMP.

If you're ready for the best of both worlds, you're ready to visualize your SAS data through JMP. You've already experienced the unparalleled depth of SAS analytics and data integration.

Now get ready for a SAS client that's unlike anything you've experienced. Get ready for software that will let you grab your data, slice it, spin it and make it come alive. JMP statistical discovery software has an attitude toward data that allows close, personal and intimate interaction with the data. JMP brings dynamic visualization to the SAS user. That's important to the SAS programmer because leveraging the powerful JMP environment with SAS code results in SAS applications that deliver rich graphics.

JMP has the direct feel of a spreadsheet, but with the supportive structure of a database—and much more graphical responsiveness. Changes happen instantly, eliminating the usual step of sending a job to the server and retrieving results.

Integration points

How does JMP 7 integrate with the SAS®9 platform? In a word: seamlessly.

JMP 7 has the ability to run SAS Stored Processes authored by SAS Enterprise Guide®, SAS Web Report Studio or other means. An intuitive user interface is included with dialog boxes generated from SAS Stored Processes.

- If JMP Scripting Language (JSL) is included with the SAS Stored Process, additional JMP features like interactive graphics can be surfaced to the users.
- Full JSL programming support is offered for SAS Stored Processes, including the ability to create custom dialog boxes in JMP to support SAS Stored Processes that need cascading prompts, selection boxes populated from SAS data sets, etc.

JMP 7 can access data that is defined physically on a SAS server using mechanisms like libnames run within a SAS program, or an autoexec file. Data defined in metadata can also be accessed with an added authorization model provided by the SAS Enterprise Intelligence Platform.

**STATISTICAL
DISCOVERY.™
FROM SAS.**

Users can “browse” data, preview a fixed number of rows, choose columns, generate SQL or write custom SQL with an intuitive point-and-click interface.

The programmer can write any SAS code within JMP and submit it to a local SAS session using COM. JMP 7 also offers the ability to run SAS code on any SAS server defined in metadata or physical servers running SAS Integration Technologies.

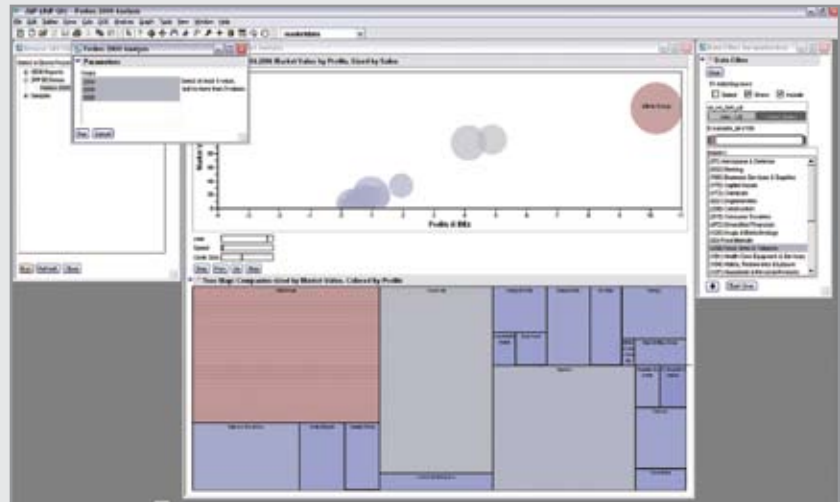
A new editor in JMP 7 recognizes JSL and SAS code, and it presents a SAS log and SAS output window.

JMP 7 also features the ability to incorporate any SAS code within JSL. This enables users to create “native” JMP interfaces that run SAS analytics in a point-and-click environment.

Key Features

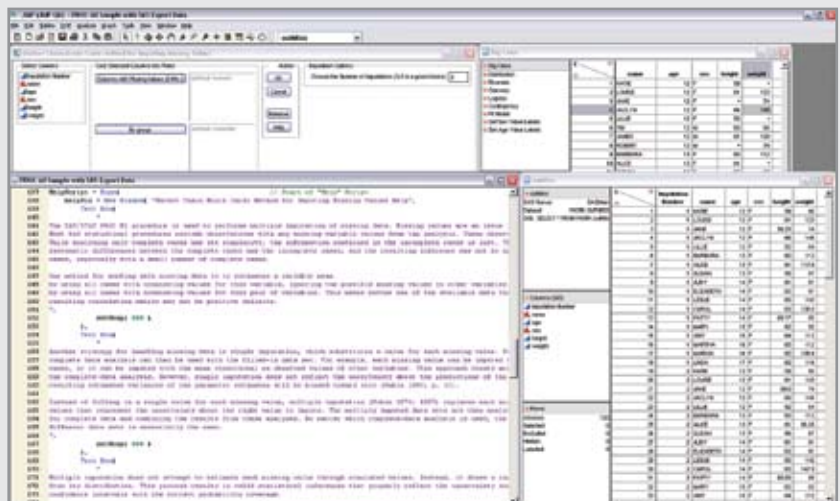
Generate reports from a SAS® servers

JMP offers the business user unparalleled access to compelling interactive, dynamic views of data. Reports can be generated from a SAS server and then augmented by adding any of the many new views of the data in the intuitive JMP client.



See point-and-click interfaces instead of complex procedures

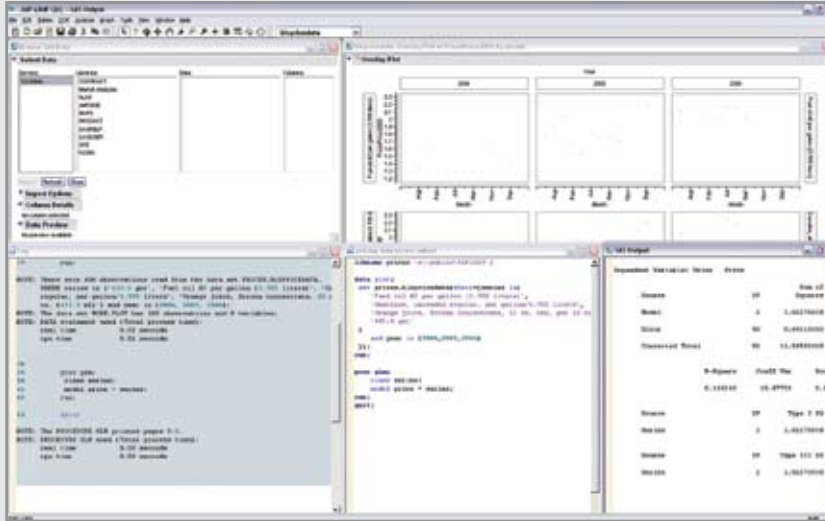
The JMP client for SAS allows you to add point-and-click interfaces to the power of SAS analytics. Below is an example of a JMP application that uses SAS/STAT's PROC MI to impute missing data using the Monte Carlo Markov Chain method for multiple imputations. The complexity of the SAS procedure is hidden behind a simple user interface, bringing the power of SAS to engineers, scientists and the business user.



Key Features (con't.)

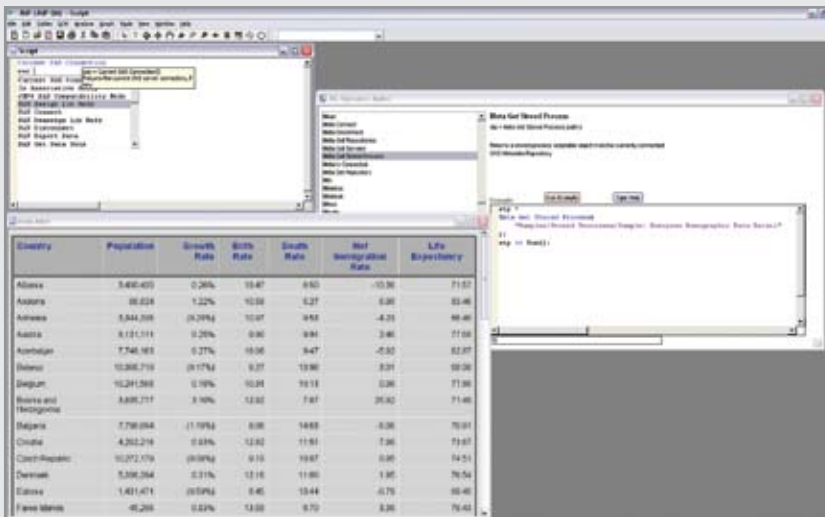
Everything you need is right there

This is a typical JMP 7 window setup for a SAS programmer. Program editor, SAS log, SAS output, data browser and JMP graphics window are displayed.



Enjoy a myriad of opportunities

JMP 7 includes a depth of support for the programmer. Syntax "autofill," syntax tool tips and online help with sample code are provided. More than 75 JSL functions are available to support the development of applications built upon the SAS Intelligence Platform.





JMP WORLD HEADQUARTERS SAS INSTITUTE INC. +1 919 677 8000 U.S. & CANADA SALES 800 727 0025 www.jmp.com

SAS and all other SAS Institute Inc. product or service names are registered trademarks or trademarks of SAS Institute Inc. in the USA and other countries. ® indicates USA registration. Other brand and product names are trademarks of their respective companies. Copyright © 2007 SAS Institute Inc. All rights reserved. 438057.0407