

# Importing Text Files

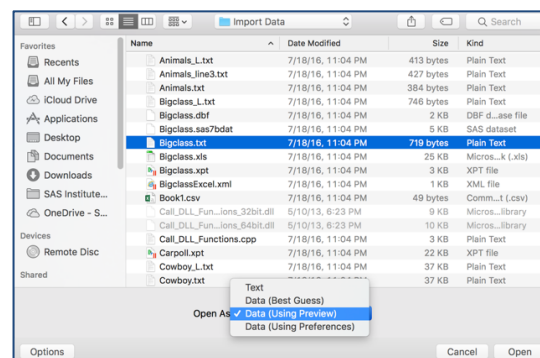
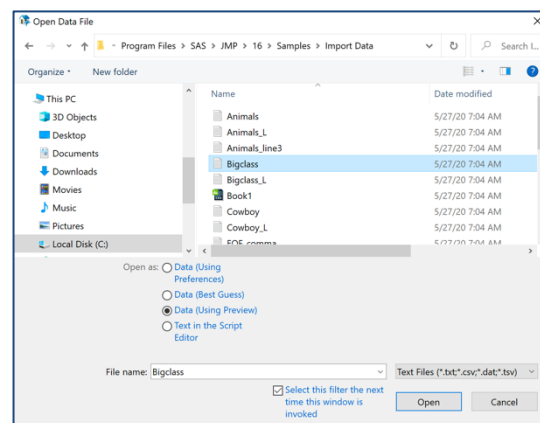
This guide provides instructions on how to import text files (.txt, .csv, .dat, or .tsv) into JMP. Windows and Mac differences are noted.

## Importing Data from Text Files

1. Select **File > Open**.
2. Navigate to the directory where your files are stored.
3. JMP will display all files recognized – unrecognized files will be grayed out.
4. Select the text file you'd like to import. In Windows, a preview of the file can be displayed during importing.
5. At the bottom of the window choose one of the four import methods next to **Open as**, and click **Open**.

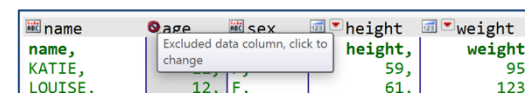
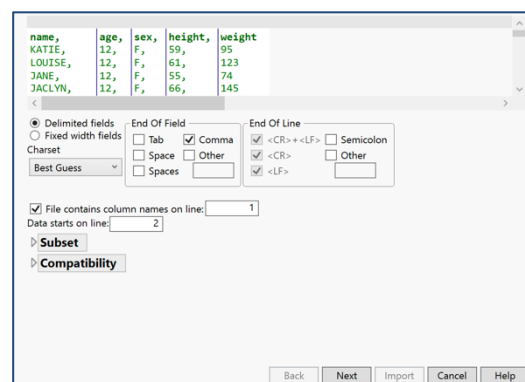
### Import Methods:

- **Data, using Text Import preferences**, or in Mac, **Data (Using Preferences)**: JMP uses the import rules set in Preferences to open the file. To see or change your preference settings, go to **File > Preferences > Text Data Files**, or in Mac, **JMP > Preferences > Text Data Files**.
- **Data, using best guess**, or in Mac, **Data (Best Guess)**: JMP uses its best guess to import the text file.
- **Data with Preview**, or in Mac, **Data (Using Preview)**: JMP displays a window with the data and options for reading in the data. Additional details are provided below.
- **Plain text into Script window**, or in Mac, **Text**: JMP opens the file in a text-editing window.



### Importing data using Preview:

- JMP will detect the file's structure and display the appropriate Text Import window. Click the **Delimited Fields** or **Fixed Width Fields** radio button to change the import type.
- Select **Next** to see how your data will look in JMP. From here, you can:
  - Click on a column name to change it.
  - Click on the icon next to each column name to toggle between Numeric, Character and Exclude.
  - Select a format for numeric columns by clicking on the red triangle next to the column name.
- Select **Import** at the bottom of the window when you're ready to import the data into JMP.



Visit **“Using JMP > Import Your Data”** in **JMP Help** to learn more.