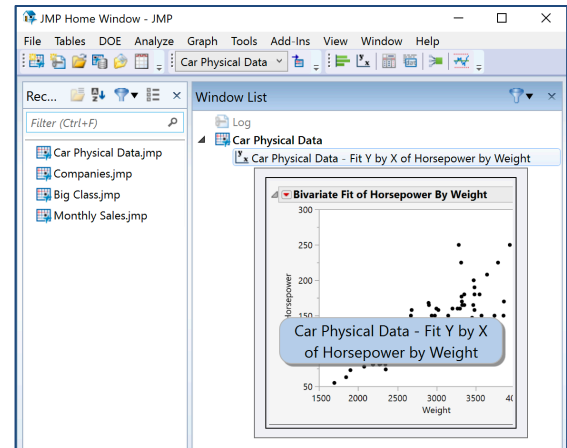


Navigating JMP® in Windows

This guide provides information on the Windows JMP interface. For information on creating a new data table, opening data tables, and finding help within JMP see the page **Opening JMP and Getting Started**.

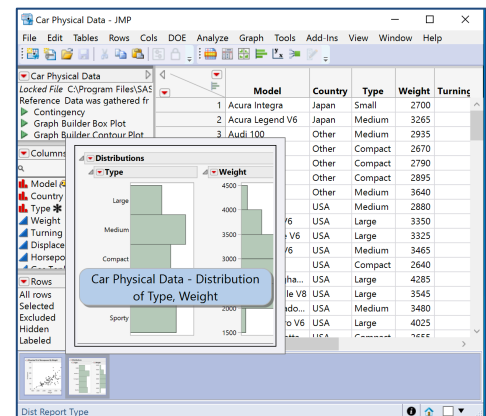
The Home Window

- When you first open JMP, you'll see the **Tip of the Day** window.
- You'll also see the **JMP Home Window** (pictured to the right), which includes:
 - Menus and toolbars (top).
 - Recently used files (on the left).
 - All open data tables and windows (on the right). Hover over an item in the list for a preview.
- The JMP Starter, Home Window and other features can be accessed via the **View** menu.



Navigation

- Data tables display thumbnails of open reports (bottom left). Hover over a thumbnail for a preview.
- Each data table and report provides icons (bottom right corner) to facilitate navigation between windows:
 - Return to the Home Window (or, click CNTL – 1).
 - Go to the data table.
 - Select to arrange with other windows.



Tips:

- Each window has a JMP menu and toolbar.
- To view a hidden menu click **Alt**, or hover on the report window where the menu would normally appear.
- To have menus and toolbars always display, go to **File > Preferences > Windows Specific** and change **Auto-hide menus and toolbars** from **Based on window size** to **Never**.
- The JMP Home Window and Tip of the Day appear by default when JMP is opened. To change the default windows, use **File > Preferences > General**.
- The Preference Window enables you to specify general and specific settings on JMP will perform operations, styles and formats for numerical and graphical output, among many other properties.

