

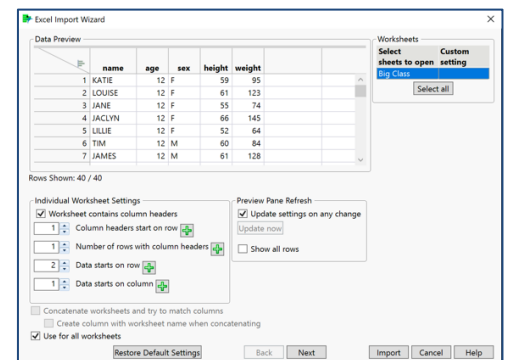
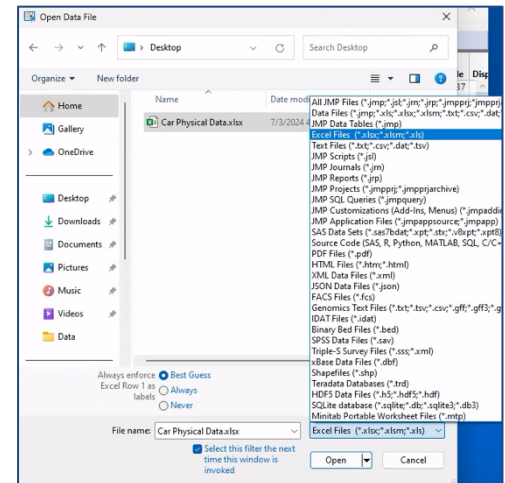
# Importing Data from Excel

This guide provides instructions on how to import data into JMP® from Excel.

## Opening Excel Files Directly in JMP

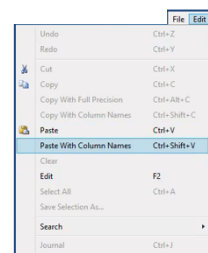
1. Select **File > Open**.
2. Navigate to the directory where your files are stored.
3. JMP will display all files that JMP can import – unrecognized files will be grayed out. In Windows, to see a complete list of file types JMP can read, click on the arrow next to **All JMP Files**.
4. Select the Excel file you'd like to import. Default settings for Windows (top) and Mac (bottom) are shown. On Mac, you will need to click the **Options** button at the bottom left to display these.
5. Click **Open**, or use the Excel Wizard to easily customize the import. To use the Excel Wizard in Windows, check the arrow next to **Open** and select **Use Excel Wizard**. On Mac, keep the default **Use Excel Wizard** as the **Excel Open Method**.
6. Importing data using **the Excel Wizard**:
  - JMP will detect the file's structure and display the appropriate Text Import window. Edit this information using the interactive dialog.
  - Select **Import** at the bottom of the window when you're ready to import the data into JMP.

Note: If you have more than one worksheet in your Excel file, JMP will import each sheet as a separate data table.



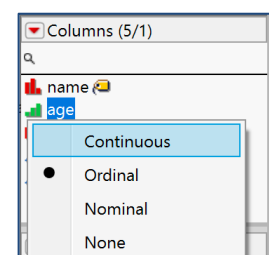
## Copying and Pasting from Excel into JMP

1. In Excel, copy the cells you'd like to import, including column names (one row).
2. In JMP, click on **File > New > Data Table**.
3. Select **Edit > Paste** or **Edit > Paste with Column Names** to paste the data into the new data table. Selecting the latter will allow you to paste column names from your Excel file.



Tips:

- Always check to make sure that the Excel file was imported correctly.
- In particular, check that JMP has assigned the **correct modeling types**. By default, numeric columns will be **Continuous** (blue triangles) and alphanumeric (text) columns will be **Nominal** (red bars).
- To change the modeling type, click on the icon in front of the column name in the **Columns** panel, or change the modeling type in the **Column Info** window.



Visit **"Using JMP > Import Your Data"** in **JMP Help** to learn more.