

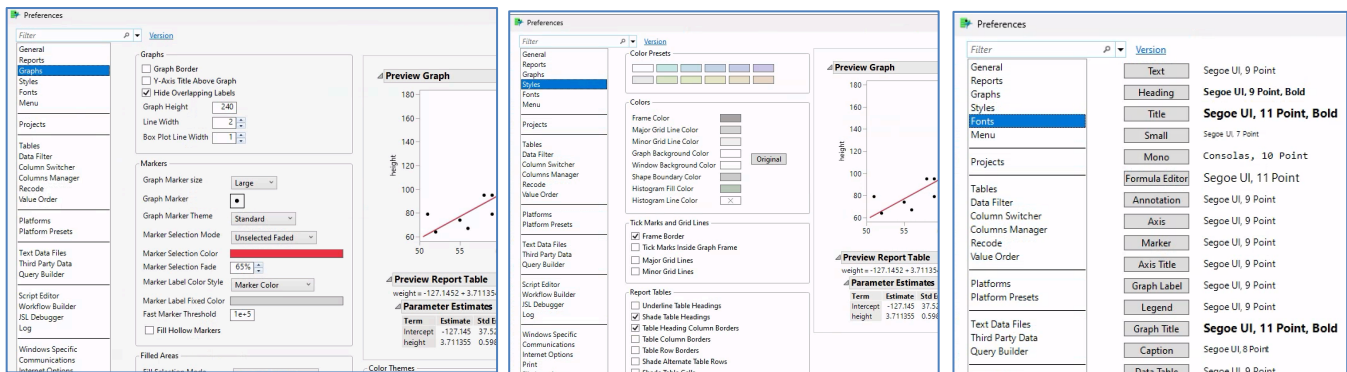
Customizing JMP (Preferences)

This guide provides information on customizing JMP. Options include general functionality, choosing specific styles (font, colors, graphical elements) to be used in graphs and reports, and specify which red triangle options are enabled/disabled as the default each time an analysis platform is run, among others. See the **Presets Guide** to learn about more tools to customize JMP.

- Access via **File > Preferences** (in Windows OS) or **JMP > Preferences** (in Mac OS).
- Preference tool for a specific platform can also be accessed from the top red triangle within the report window of that platform (**Platform Preferences > Go to**). Red Triangle selections made within a report can be saved as the Preferences for that platform via **Platform Preferences > Save Changes to**.

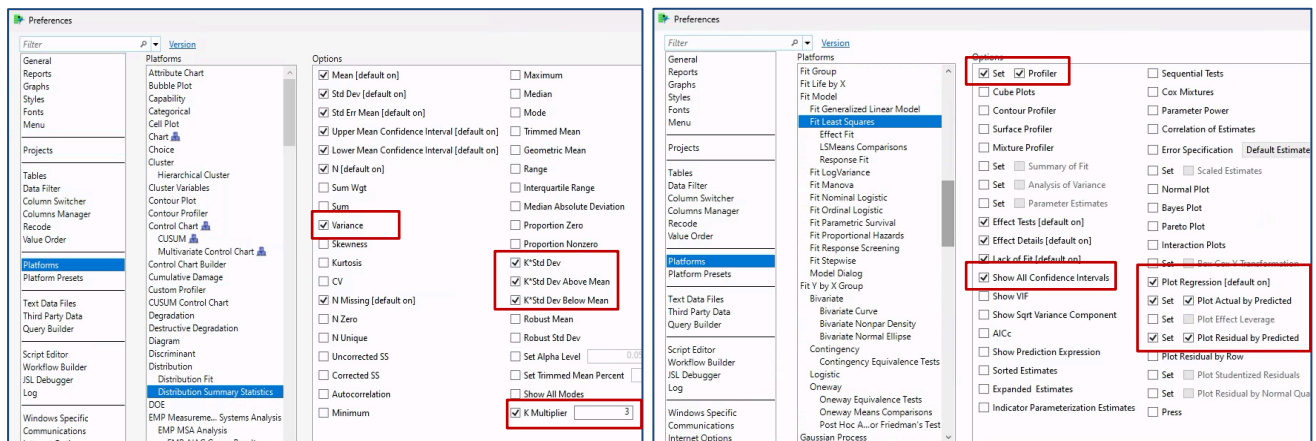
Styles for Graphs and Reports Globally

Choices can be made on the colors and styles for graphical elements, tables, fonts, among others across all platforms throughout JMP.



Preferences for Specific Platforms

Choices can be made on the specific analyses to be performed and metrics to be displayed each time a particular platform is run. On the left, the default set of statistics to be displayed in the Summary Statistics table in the Distribution platform is modified to include the Variance, 3*Std Dev, 3*Std Dev Above Mean, and 3*Std Dev Below Mean. On the right, changes to the Fit Model (Fit Least Squares) platform are made so that the Profiler, Confidence Intervals, Actual by Predicted and Residual by Predicted plots will be included in the initial report as the default.



Visit “Using JMP > JMP Preferences” in JMP Help to learn more.