

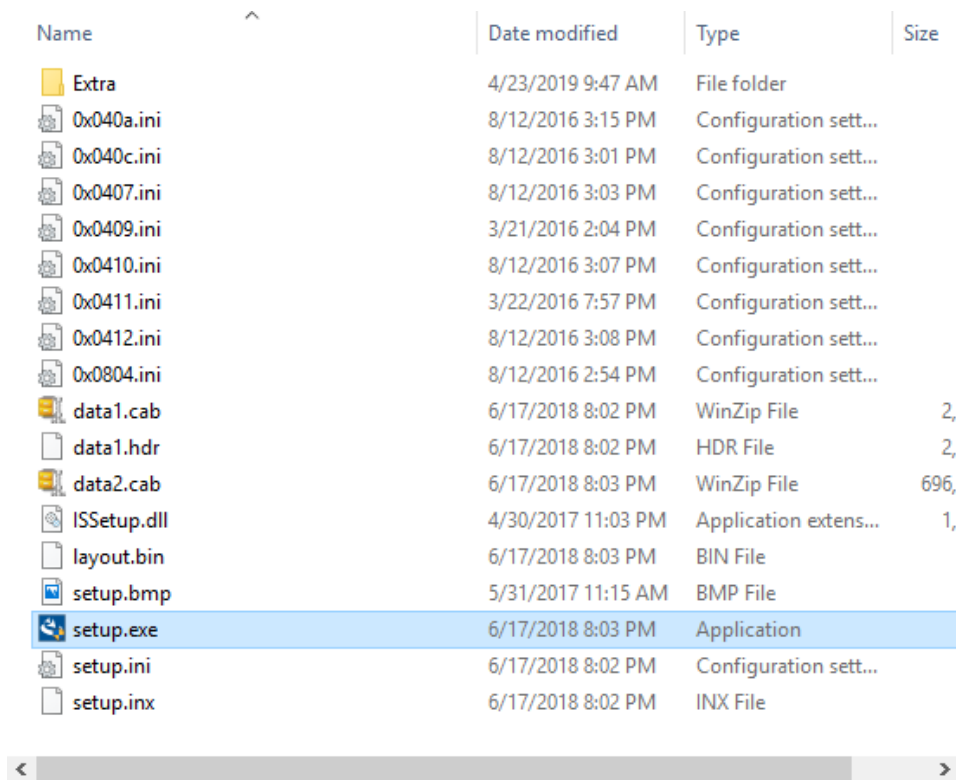
The following is a step-by-step guide for sites who wish to provide their users with an instruction set to install JMP®.

Note: This is not intended to address any environmental or system related issues that may arise during the installation process. If any deviations are encountered during the install, verify you are running a version of JMP support by your operating system as listed at [JMP System Requirements \(Windows\)](#). Otherwise, please contact your IT Administrators. You can also reach out to JMP Technical Support via [Technical Support Services](#).

1. Download the JMP Software Depot to the Downloads folder on your computer.
2. Install JMP.

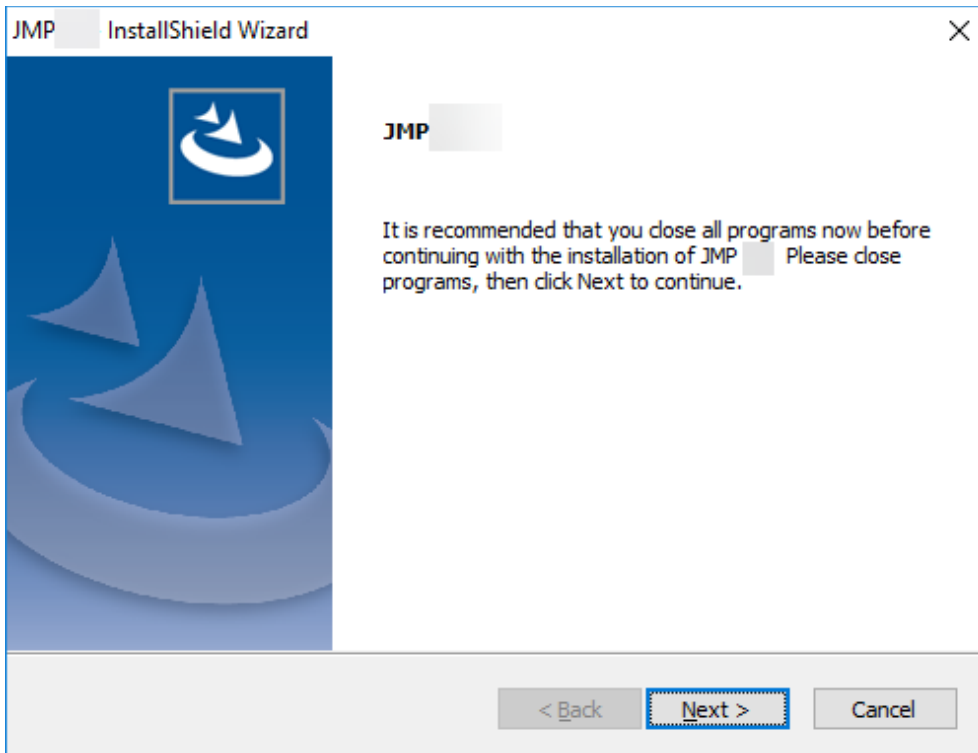
In the Downloads folder, browse to the “/JMP/JMP/<version>/Windows” directory and **Double-click** the “setup.exe”.

Note: **Right-click** the setup.exe and choose **Run as Administrator** to install JMP with the highest privileges possible. If you are prompted to enter a user name and password, contact your IT administrator to help you with the installation.

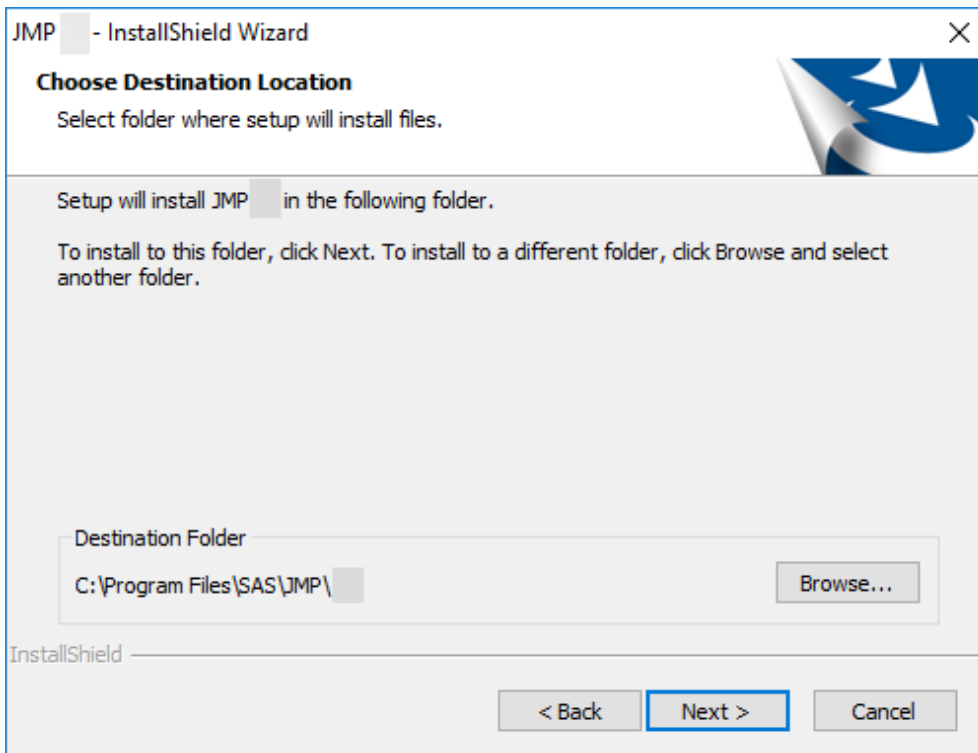


Name	Date modified	Type	Size
Extra	4/23/2019 9:47 AM	File folder	
0x040a.ini	8/12/2016 3:15 PM	Configuration sett...	
0x040c.ini	8/12/2016 3:01 PM	Configuration sett...	
0x0407.ini	8/12/2016 3:03 PM	Configuration sett...	
0x0409.ini	3/21/2016 2:04 PM	Configuration sett...	
0x0410.ini	8/12/2016 3:07 PM	Configuration sett...	
0x0411.ini	3/22/2016 7:57 PM	Configuration sett...	
0x0412.ini	8/12/2016 3:08 PM	Configuration sett...	
0x0804.ini	8/12/2016 2:54 PM	Configuration sett...	
data1.cab	6/17/2018 8:02 PM	WinZip File	2,
data1.hdr	6/17/2018 8:02 PM	HDR File	2,
data2.cab	6/17/2018 8:03 PM	WinZip File	696,
ISSetup.dll	4/30/2017 11:03 PM	Application extens...	1,
layout.bin	6/17/2018 8:03 PM	BIN File	
setup.bmp	5/31/2017 11:15 AM	BMP File	
setup.exe	6/17/2018 8:03 PM	Application	
setup.ini	6/17/2018 8:02 PM	Configuration sett...	
setup.inx	6/17/2018 8:02 PM	INX File	

- a. Click **Next** at the InstallShield Wizard window.



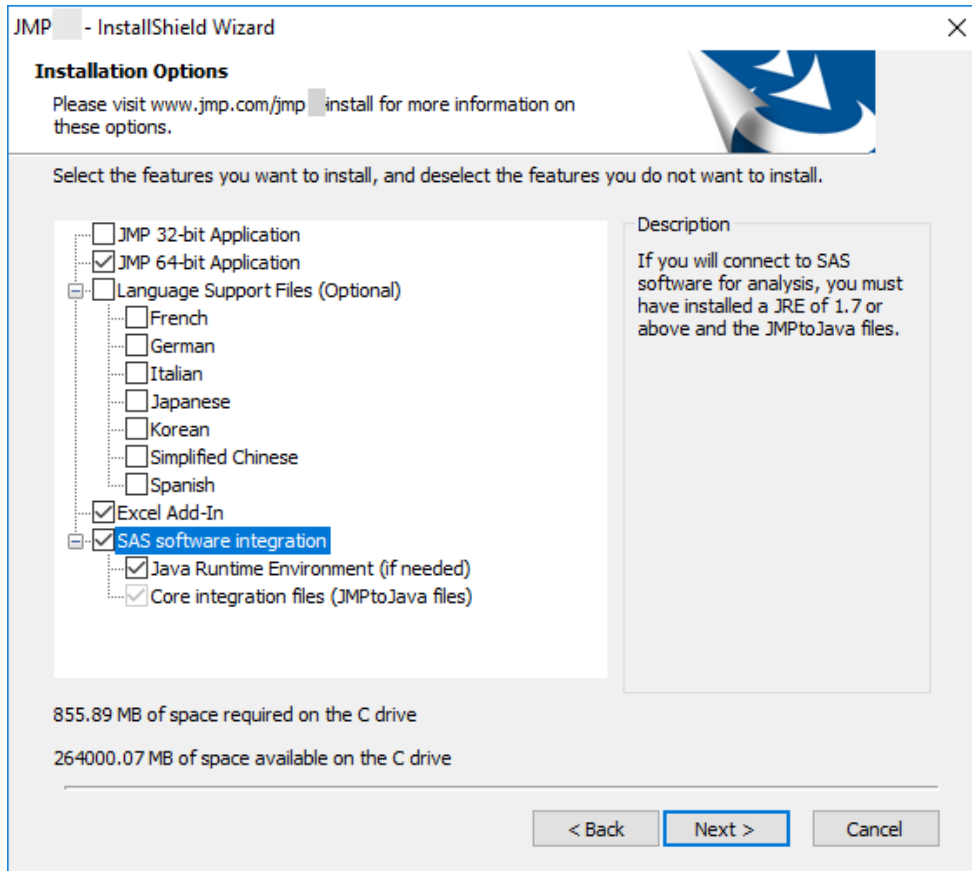
- b. Click **Next** at the **Choose Destination Location** window.



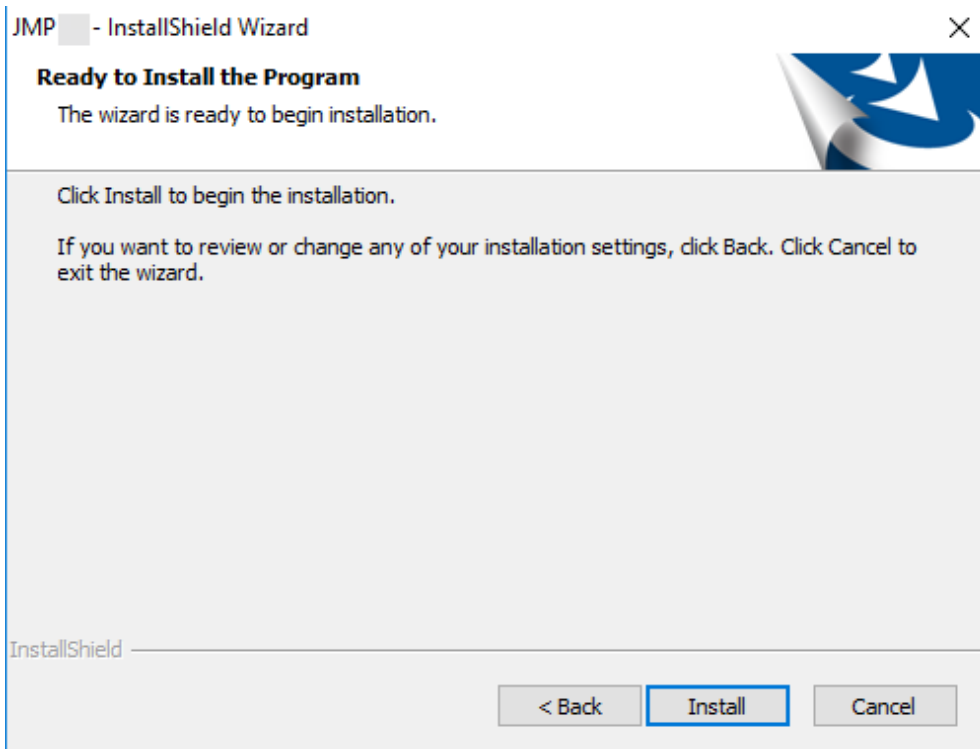
- c. Click **Next** at the Installation Options window.

Note: These options are explained below:

- **Language Support Files (Optional)** – Installs the language files needed if you plan to operate JMP under different display languages.
- **Excel Add-in** – Installs the JMP Excel Add-In within Excel.
- **SAS software integration** – Installs the JAVA components needed to connect to a remote SAS server from JMP.

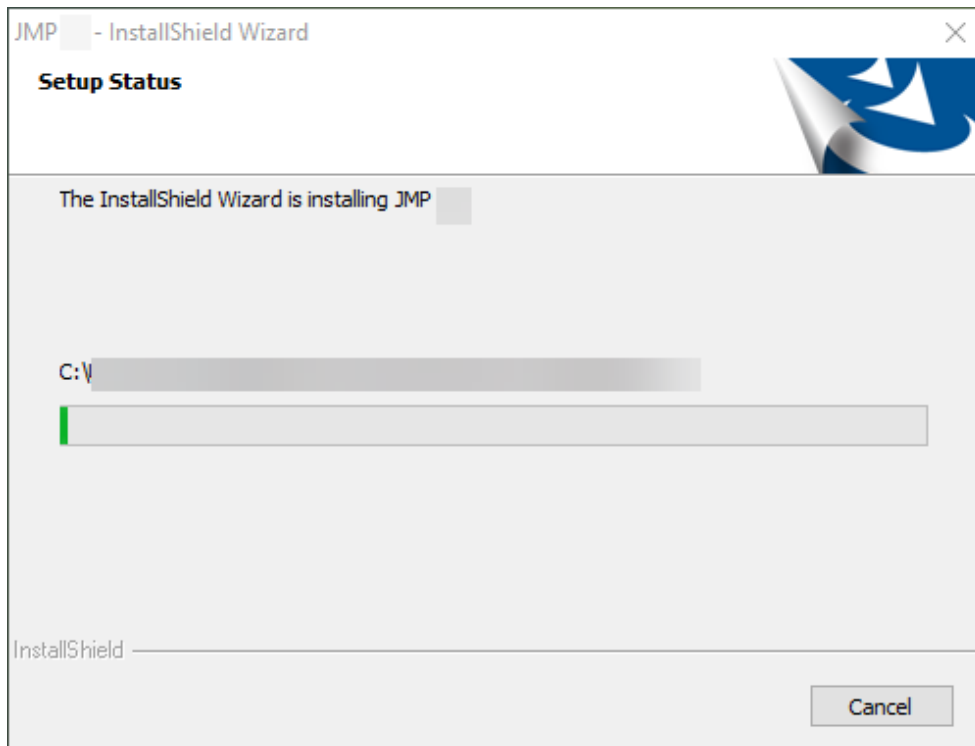


d. Click **Install**.

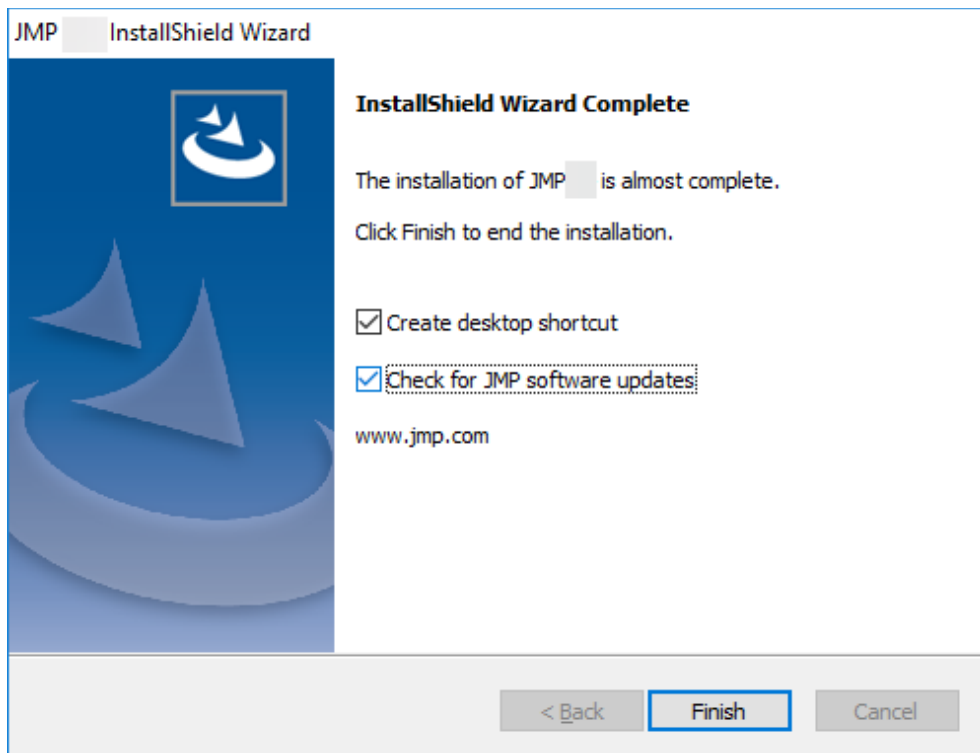


- e. Wait for the installation to complete at The InstallShield Wizard is installing JMP <version> window.

Note: JMP will begin to install Microsoft .NET, Microsoft Visual C++ Redistributables and other JMP support files.



- f. At the InstallShield Wizard Complete window, select whether you wish to **Create desktop shortcut** and/or if you wish to have JMP **Check for JMP software updates**.



g. Click **Finish**.

3. To launch your JMP <version>.

- a. Navigate to **Start** and select **JMP <version>**.
- b. Click the “**Wait to Register**” or “**Register**” option.

4. When JMP is opened it may prompt you with the Open License prompt if JMP did not find a valid license in the **sid_files** (the folder within the folder JMP Software Depot) during the installation.

- a. Click the **Open License** button.
- b. Browse to the save location of the JMP Software Depot and navigate to /JMP/sid_files/.
- c. Locate the license JMP<version>_<ORDERNUMBER>_<TSSITE#>_Win_X64.txt file.
- d. Select the file and click **Open** once the file is selected.
- e. JMP should tell you the license was accepted.

5. JMP is now installed and ready for use.